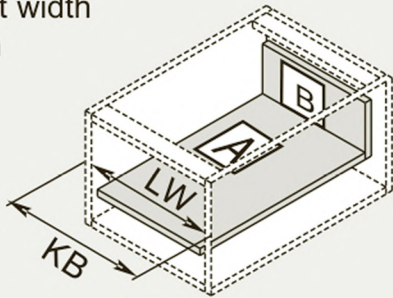


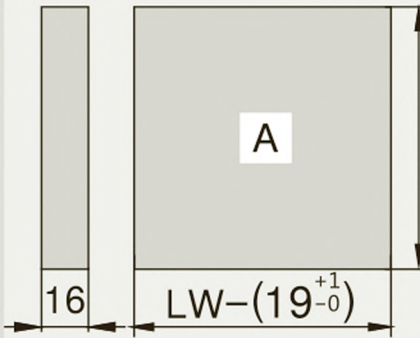


Cutting dimensions for 16mm chipboard

KB Cabinet width
LW Internal cabinet width
NL Nominal length

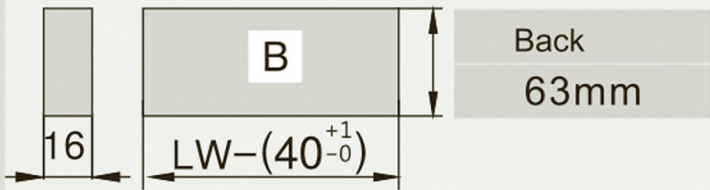


Bottom

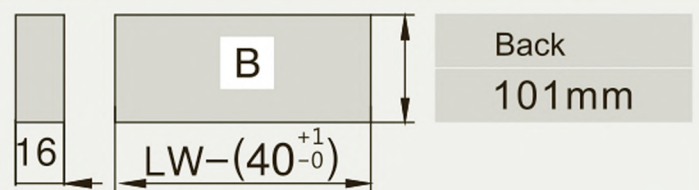


Chipboard back
NL-29 mm

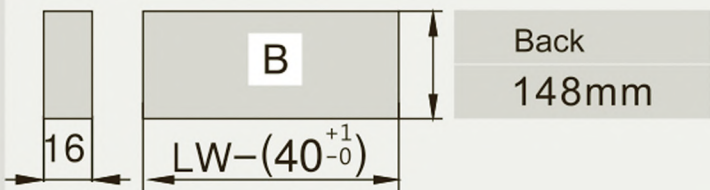
Low Drawer: Slim Box 1&5 (88mm)



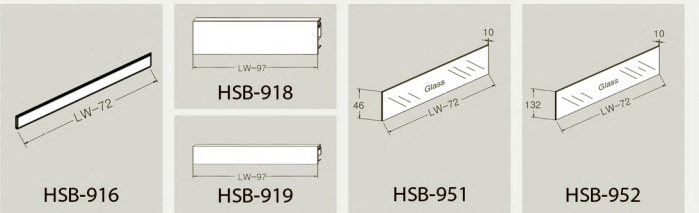
Medium Drawer: Slim Box 2(126mm)



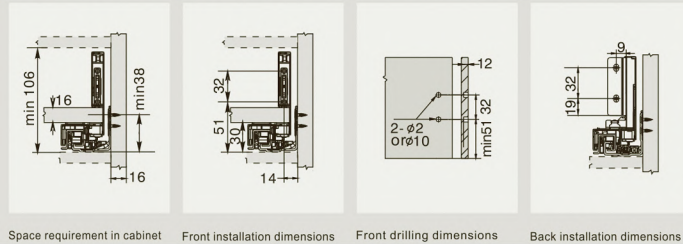
High Drawer: Slim Box 3&6 (172mm)



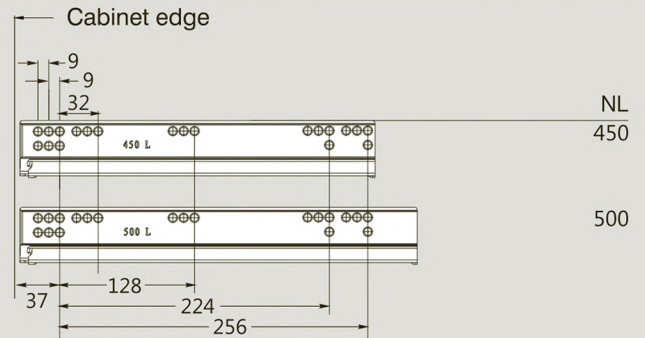
Inner Drawer Front Section



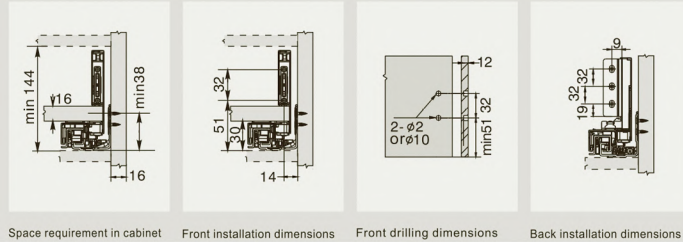
Low Drawer: Slim Box 1&5 (88mm)



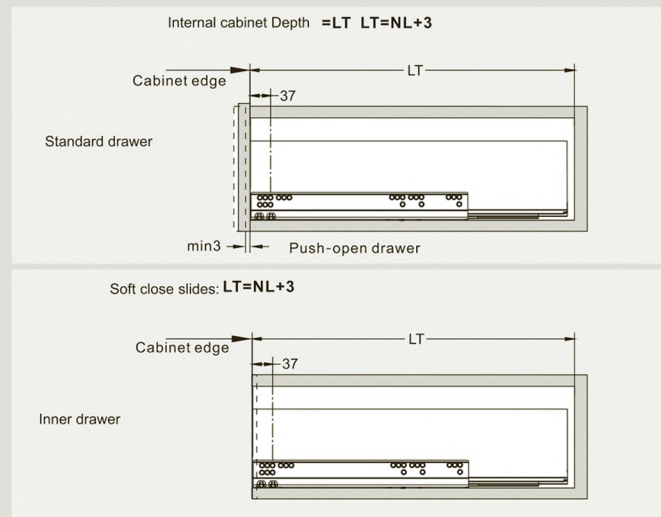
Screw Positions of the Slides



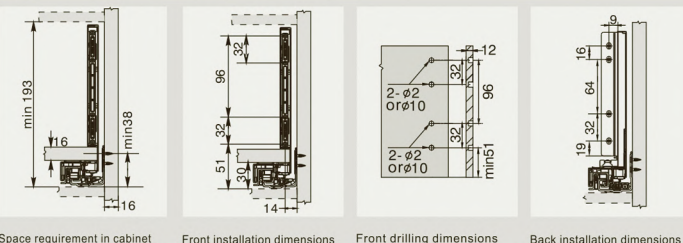
Medium Drawer: Slim Box 2(126mm)



Installation dimensions



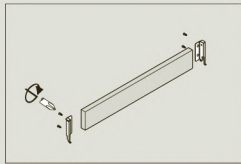
High Drawer: Slim Box 3&6 (172mm)



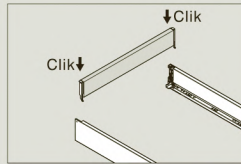
Assembly and Adjustment

(for SLIM BOX by HANDORF)

Drawer Assembly

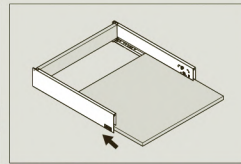


Back assembly

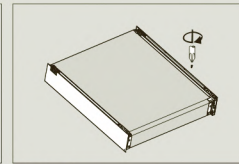


Clik

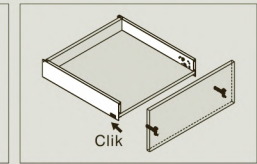
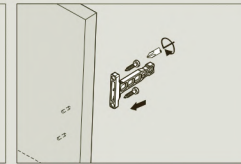
Clik



Bottom assembly

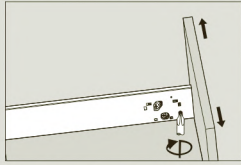


Fix screws

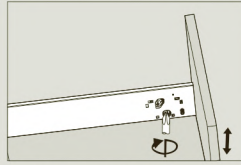


Front assembly

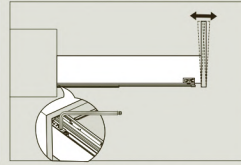
Adjustment



Left&right adjustment

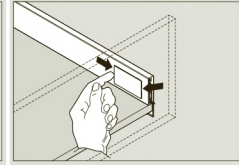


Up&down adjustment

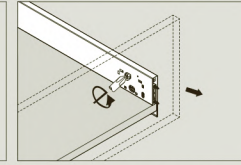


Tilt adjustment (by M3 Allen key)

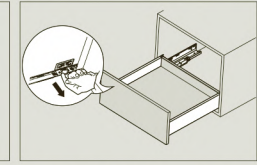
Removal



Tip up the cover and pull out

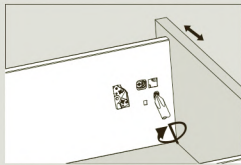


Turn screw driver to release the drawer front

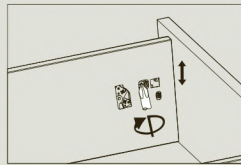


Press the locking device under drawer bottom and pull out the drawer

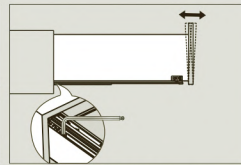
Adjustments for High Drawer



Left&right adjustment

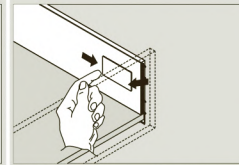


Up&down adjustment

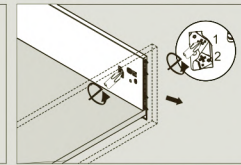


Tilt adjustment (by M3 Allen key)

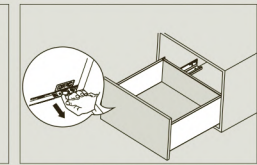
Removal of High Drawer



Tip up the cover and pull out

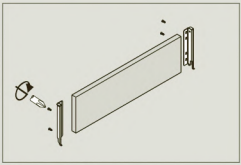


Turn screw driver to release lock 1, then release lock 2, remove the drawer front

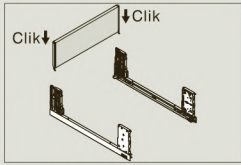


Press the locking device under drawer bottom and pull out the drawer

Assembly for High Drawer Glass-boxside

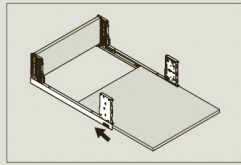


Back assembly

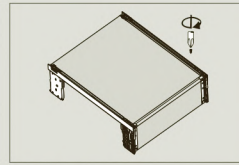


Clik

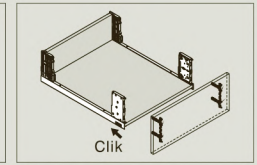
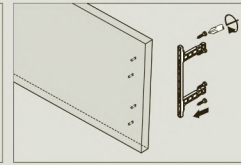
Clik



Bottom assembly



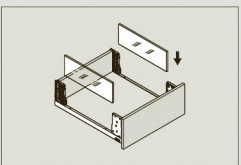
Fix screws



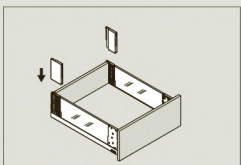
Clik

Front assembly

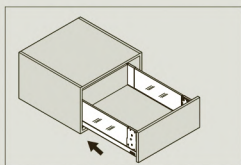
Assembly for High Drawer Glass-boxside



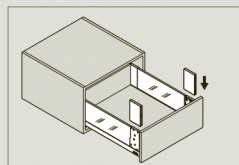
Insert glass-boxside



Insert back cover

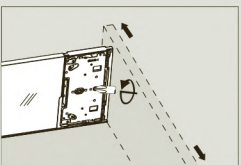


Slide into the cabinet

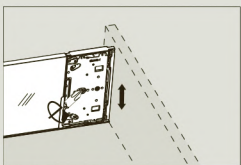


Insert front cover

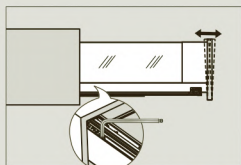
Adjustment for High Drawer Glass-boxside



Left & right adjustment

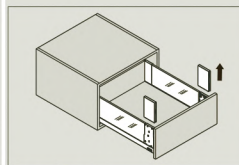


Up & down adjustment

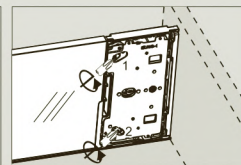


Tilt adjustment (by M3 Allen key)

Removal for High Drawer Glass-boxside



Pull out front cover

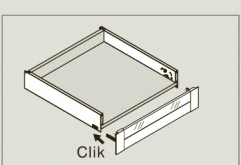
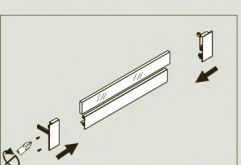


Turn screw driver to release lock 1, then release lock 2, remove the drawer front

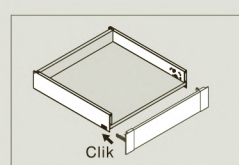
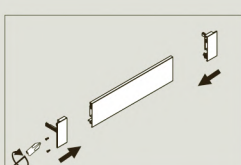


Press the locking device under drawer bottom and pull out the drawer

Low Inner Drawer Front assembly (M Height)

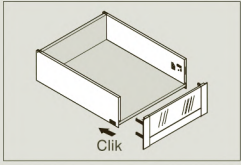
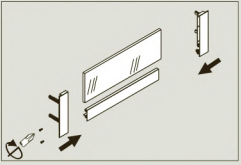


Clik

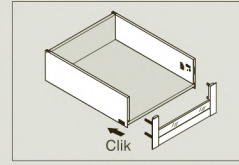
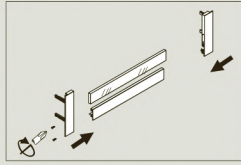


Clik

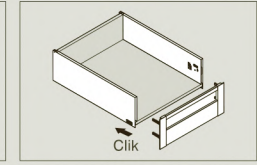
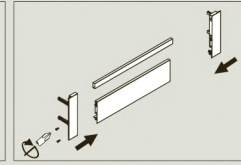
High Inner Drawer Front assembly (C Height)



Clik



Clik



Clik